



TIANJIN DSR BEARING





-QUALITY- -CREATIVITY- -CONSISTENCY-

DSP BEARING

CONTENS

Ball bearings

Deep Groove Ball Bearing	03
Angular Contact Ball Bearing	04
Self Aligning Ball Bearing	05
Thrust Ball Bearing	06

Roller bearings

Cylindrical Roller Bearing	08
Tapered Roller Bearing	09
Spherical Roller Bearing	10
Thrust Roller	11

Pillow Block Bearing	13
Automobile Wheel Hub Bearing	15
Needle Roller Bearing	17

Slewing Bearing	19
-----------------	----

Comon mechanical parts

Adapter sleeve Withdrawal sleeve Capt locks Hydraulic nuts	22
Sealing	23

Other material bearings

Ceramic Bearing	25
Stainless Steel Bearing	27

Reducer Bearing	29
Special Bearing	31
SKF Grease	33

ABOUT US

TIANJIN DSR BEARING CO.,LTD

Tianjin DSR Bearing Co.,ltd

Tianjin DSR Bearing Co.,ltd is a professional manufacturer and supplier for bearings for more than 15 years. Our factory is located in Shandong province and covering an area of 20,000 square meters, it boasts of 120 staff, among which 6 are senior engineers and technicians, with a registered capital of 20,000,000 and an annual production capacity of 3,000,000 units of bearings.

our export department office is located in Tianjin city which is a port city ,for convenience inspection before shipment .

Our main products include ball bearings,roller bearings, wheel hub bearings etc. ,but also we accept customized products design and OEM Service based on the detailed drawings from our clients .

SKF, NSK, NTN, KOYO, NACHI, FAG, INA, IKO, NMB , these famous brands all have deep connection and strong cooperation relationship with us . We can also export the above products in appropriate way according to clients' market .

After several years' development, our company has formed a professional management system and our corporate value is "Considering more for customer' sconsideration", which is also our business principle.

Our products are comprehensive used in different fields such as , mining, petroleum, machinery, electric power, furniture etc. We sincerely wish to build reliable relationship with every of our customers from worldwide.

“Good quality with sincere service” is our slogan to our clients .



BALL BEARINGS





Deep Groove Ball Bearing

Deep groove ball bearing is the most widely used rolling bearing. Its features are small friction resistance and high speed. Usually have open and sealed design. Available as single row and double row. Widely used in automobiles, tractors, machine tools, motors, water pumps, agricultural machinery, textile machinery and etc.



Open Type



Metallic Seal



Rubber Seal(black)



Rubber Seal(brown)

Series	Inner ring diameter(mm)	Variant structure
61800	10-1200	Z、2Z、RZ、2RZ
61900	10-1000	Z、2Z、RZ、2RZ、N、NR、ZN、RZN
16000	10-1000	
6000	10-1000	Z、2Z、RZ、2RZ、RS1、2RS1、N、NR、ZN、RZN
6200	10-1400	Z、2Z、RZ、2RZ、RS1、2RS1、N、NR、ZN、RZN
6300	10-1200	Z、2Z、RZ、2RZ、RS1、2RS1、N、NR、ZN、RZN
6400	10-1200	N、NR

Angular Contact Ball Bearing

Angular contact bearing have a high limit speed and can be used in very high speed conditions, bears both radial and axial loads, usually used in pairs. The main structural forms are single rows and double rows. Suitable for machine tool spindles, gearboxes, reducers, centrifuges and boosters and other equipments.



Brass Cage



Steel Cage



Resin Cage



Bakelite Cage



Single Row



Double Row

Angular contact ball bearing

Single row Angular contact ball bearing

contact angle	contact angle	bore diameter(mm)
15° 25°	45°	
7000C、AC		10-600
7200C、AC	7200B	10-600
7300C、AC	7300B	10-600
Deuble row Angular contact ball bearing		
contact angle30°	bore diameter (mm)	variant structure
3200A	10-600	2RS、2Z、N
3300A	10-600	2RS、2Z、N
3200	10-600	2RS、2Z、N
3300	10-600	2RS、2Z、N

Self-Aligning Ball Bearing

Self-aligning ball bearing Self aligning, is recommended when the alignment of the shaft and housing is difficult or when the shaft may bend during operation. can compensate the error caused by different concentricity and axial deflection. and the retainer can be made of steel, brass and nylon. Widely used in mining metallurgy, paper making, and construction. And other large machinery and equipment.



Nylon Cage



Steel Cage



Brass Cage



With oil groove



Without oil groove

Series	Cylindrical bore(mm)	Tapered bore(mm)	Variant structure
1200 1200k	10-120	10-120	2RS +H200
1300 1300k	10-110	10-110	2RS +H300
2200 2200k	10-110	10-110	2RS +H300
2300 2300k	10-110	10-110	2RS +H2300

Thrust Ball Bearing

Thrust ball bearing It consists of seat ring, shaft ring and steel ball retainer three parts. Unidirectional thrust ball bearing can bear unidirectional axial load. Bidirectional thrust ball bearing, capable of bearing bidirectional axial load, wherein the shaft ring fits the shaft. The mounting surface of the seat ring is spherical bearing, which has the performance of centering and can reduce the influence of mounting error. Commonly used in automotive, marine, and aerospace applications. They are also used in the main and tail rotor blade grips of helicopters.



Two-way thrust ball bearing



With steel cage

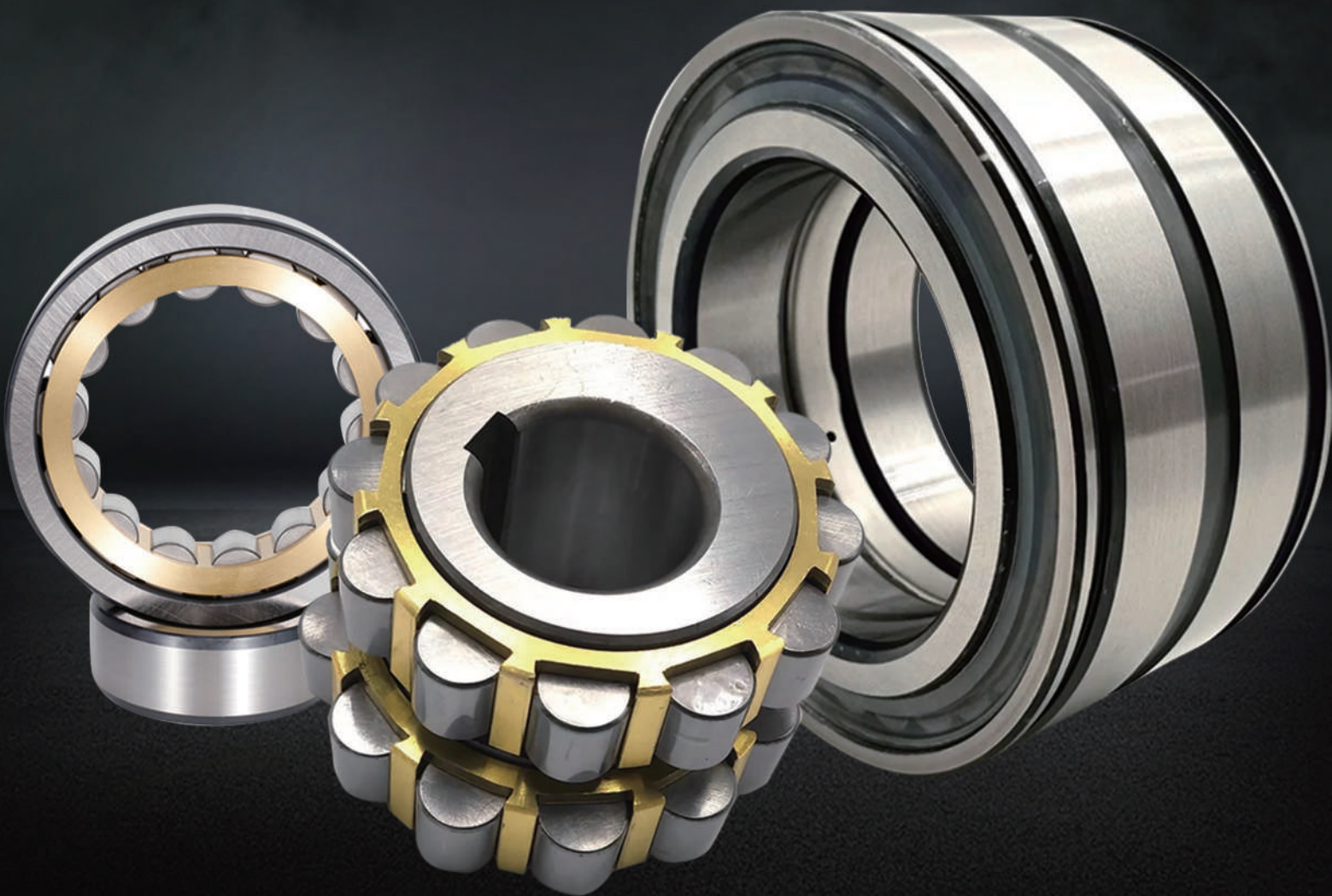


One-way thrust ball bearing

Thrust ball bearing

Series	Bore diameter-(mm)
51100	10-800
51200	10-1000
51300	10-1000
51400	10-1200
52200	10-1000
52300	10-1200

ROLLER BEARINGS



Cylindrical Roller Bearing

Cylindrical roller bearing Separable design, easy to install and remove. Compared to ball bearings, cylindrical rollers have a greater radial load capacity. can be made with a cage or as a full complement part. With their combination of greater radial load capacity, ability to accommodate faster speeds, and other benefits, cylindrical roller bearings are ideal for use in a variety of industries.



Single row Brass cage



Single row Steel cage



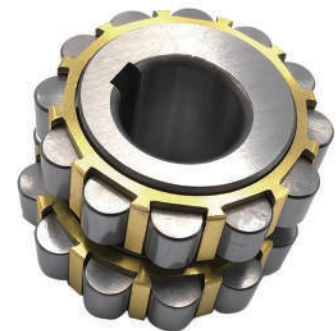
Double row
Cylindrical roller bearing



Four rows
Cylindrical roller bearing



SL full complement
roller bearing



Eccentric bearing

Metric series	Bore diameter(mm)	Metric series
200E	10-1200	N、NF、NJ、NU、NUP
300E	10-1200	N、NF、NJ、NU、NUP
400E	260-800	N、NF、NJ、NU、NUP
1000	10-1000	N、NF、NJ、NU、NUP
2200E	10-1000	N、NF、NJ、NU、NUP
2300E	10-1200	N、NF、NJ、NU、NUP



Tapered Roller Bearing

Tapered roller bearing The inner components and outer ring can be installed separately. Usually used in pairs, Radial and axial clearance can be adjusted during installation and use. It is mostly used for automobile rear axle hubs, large machine tool spindles, and high power. Reducer, rollers of conveying device and support roller and work roller of rolling mill.



Single row tapered roller bearing



Double row tapered roller bearing



Four rows tapered roller bearing

Tapered roller bearing

Metric series	Bore diameter(mm)	Metric series	Bore diameter(mm)
32900	10-800	352000	160-1400
32000x	10-700	352200	160-1200
30200	10-600	352900	180-1200
30300	10-600	352000	180-1200
32200	10-600	350600	180-1000
32300	30-500	351900	180-1400
33000	10-600	351000	180-1200

Spherical Roller Bearings

Spherical roller bearing High radial load capacity, it can bear larger radial force and axial force, and has the function of adjusting axis automatically. With two rows of rollers, good alignment performance, can adjust for some coaxial errors. Especially suitable for medium load or vibration load equipments.



MB Type



CC Type



MA Type



CA Type

Series	Bore diameter(mm)	Metric series	Variant structre
22200	10-1400	352000	K、 /w33、 K/W33
22300	10-1200	352200	K、 /w33、 K/W33
23100	10-1400	352900	K、 /w33、 K/W33
23200	10-1400	352000	K、 /w33、 K/W33
23000	10-1600	350600	K、 /w33、 K/W33



Thrust Roller Bearing



Thrust tapered roller bearing



Thrust roller bearing



Thrust tapered roller bearing
Brass cage



Nylon Cage



Plain thrust roller bearing

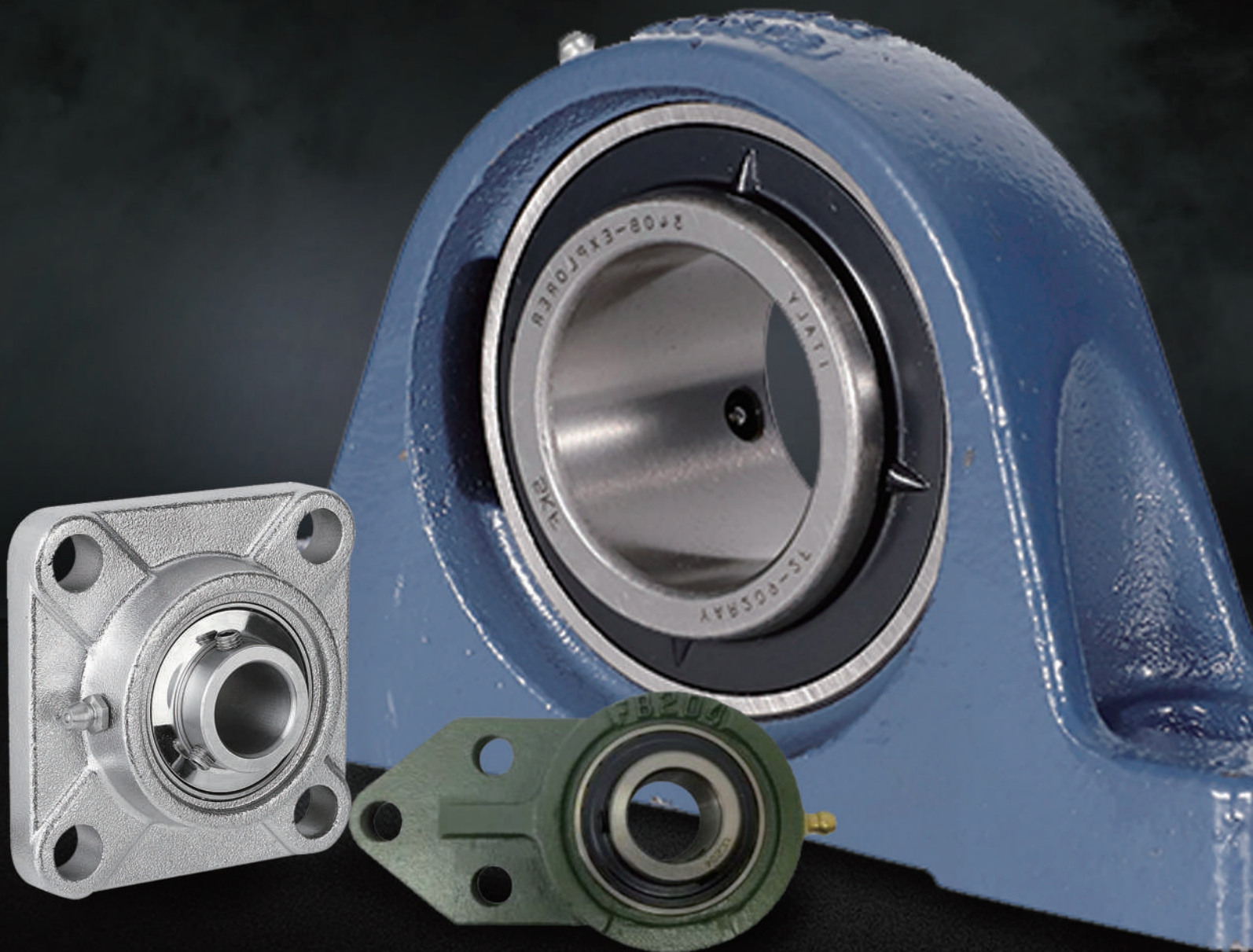


Two-ways thrust roller bearing

Thrust roller bearing

series	bore diameter (mm)	series	bore diameter(mm)
29200	150-500	81100	15-440
29300	85-480	81200	50-110
29400	80-480	AXK	5-100

PILLOW BLOCK BEARINGS





Pillow Block Bearing



UCP-Type



UCF-Type



UCT & UCST-Type



UCFB-Type



SN-Type



UCFL-Type



UCPA-Type



UCFC-Type



SY-Type

Pillow block Bearing

HUB BEARING





Hub Bearing



LEXUS



AUDI A6



SAGITAR



COROLLA



CIVIC



CRUZE



BMW



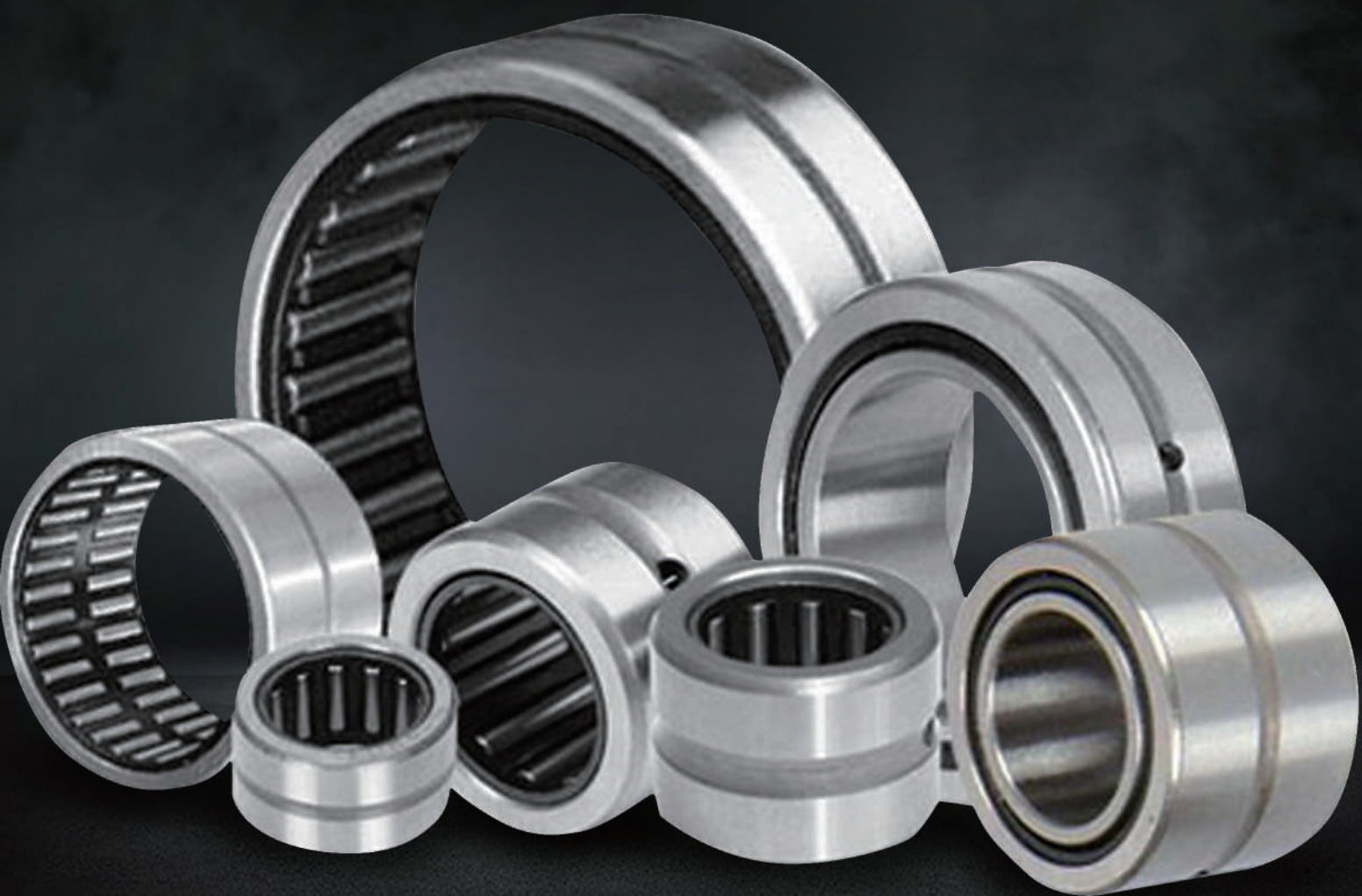
Mercedes-Benz



SYLPHY

Hub Bearing

NEEDLE ROLLER BEARINGS





Needle Roller Bearing



NA/RNA type



NSRT/NURT type



Double row
needle bearing



K type



NK/NKR type



HK type



One way needle bearing



without outer ring



BK series

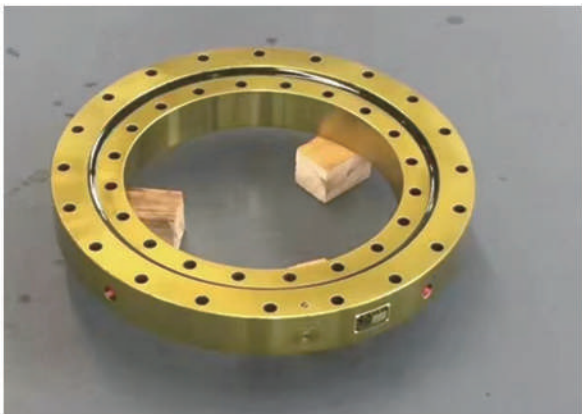
SLEWING BEARING





Slewing Bearing

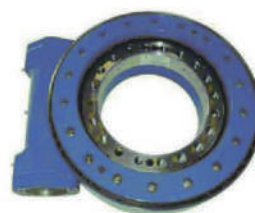
Slewing bearing is also called rotary bearing and cyclotron bearing. There are many forms of slewing bearings, but their structural composition is basically the same. It is a kind of large bearing that can bear the comprehensive load, and can bear large axial and radial loads and overturning moment at the same time. Slewing bearing generally has mounting hole, inner or outer gear, lubricating oil hole and sealing device, which can make the main engine design compact structure, simple guidance, easy maintenance. Widely used in lifting machinery, mining machinery, construction machinery, port machinery, ship tools and high precision radar machinery and missile launcher and other equipment in the large rotary device. At the same time, we can also design, develop and produce all kinds of special structure slewing bearing according to the specific requirements of users. The main material is high alloy structural steel such as 50Mn, 42CrMo, stainless steel and other special purpose materials.



Vertical slewing drive



Azimuth & elevation axis combined



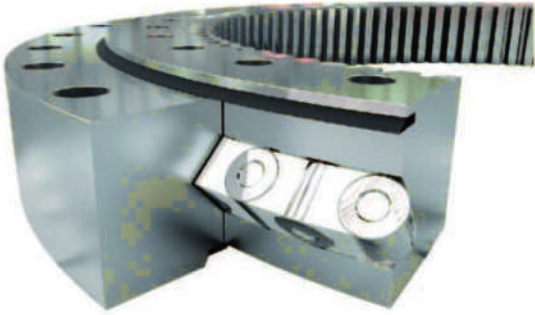
SE/PE slewing drive



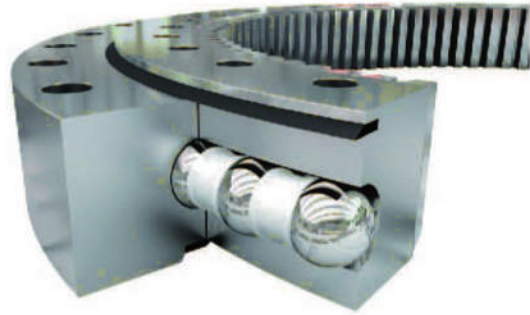
Zero backlash slewing drive

Slewing bearing

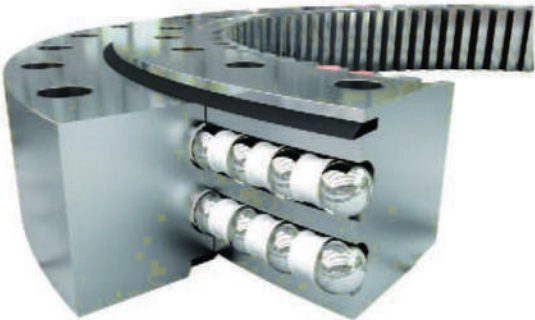
Slewing Bearing



Single-row crossed roller series



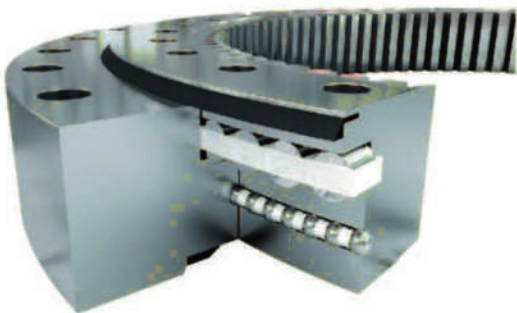
Single-row four point contact ball series



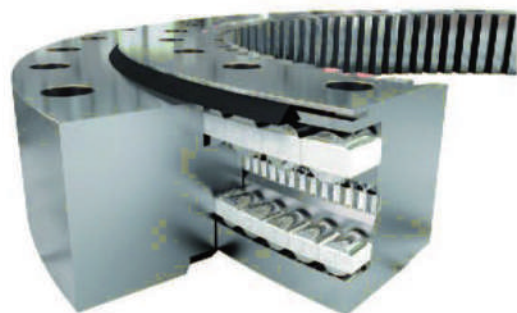
Double Row Eight-Point Contact Ball Bearings



Double-row ball series



Roller and ball combination series



Three-row roller series

COMMON MECHANICAL PARTS



Sleeves And Lock Parts



Adapter sleeve



Withdrawal sleeve



Z2 expansion sleeve



Z18 expansion sleeve



Z21 expansion sleeve



Z11 expansion sleeve



External teeth lock washer



Locknut



Hydraulic nut



Sealing



TC type



O rings



Nitrile rubber oil seal



High temperature oil seal



Framework oil seal



Floating oil seal



Bonded seal washer



Auto car seal



Hydraulic seal

Sealing

CERAMIC BEARINGS





Ceramic bearing

Ceramic bearings have the characteristics of high temperature resistance, cold resistance, wear resistance, corrosion resistance, magnetic insulation resistance, oil-free self-lubrication, high speed and so on. Can be used in extremely harsh environment and special working conditions, can be widely used in aviation, aerospace, navigation, petroleum, chemical, automobile, electronic equipment, metallurgy, electric power, textile, pump, medical equipment, scientific research and national defense and other fields, is the new material application of high-tech products.



Whole ceramic bearing



Chrome steel Hybrid ceramic ball bearing



Stainless steel Hybrid ceramic ball bearing



Hybrid ceramic ball bearing



Whole ceramic aligning ball bearing



Whole ceramic insert bearing



ZrO₂ ceramic bearing



Ceramic thrust ball bearing



Si₃N₄ ceramic full complement bearing

STAINLESS STEEL BEARINGS





Stainless Steel Bearing



Insert Bearing



Deep Groove Ball Bearing



P type housing



Self Aligning Ball Bearing



UCFL Type Housing



Thrust Ball Bearing



Fishing Gear Bearing



Miniature Bearing



Joint Bearing

REDUCER BEARINGS





Reducer Bearing



Separable Type



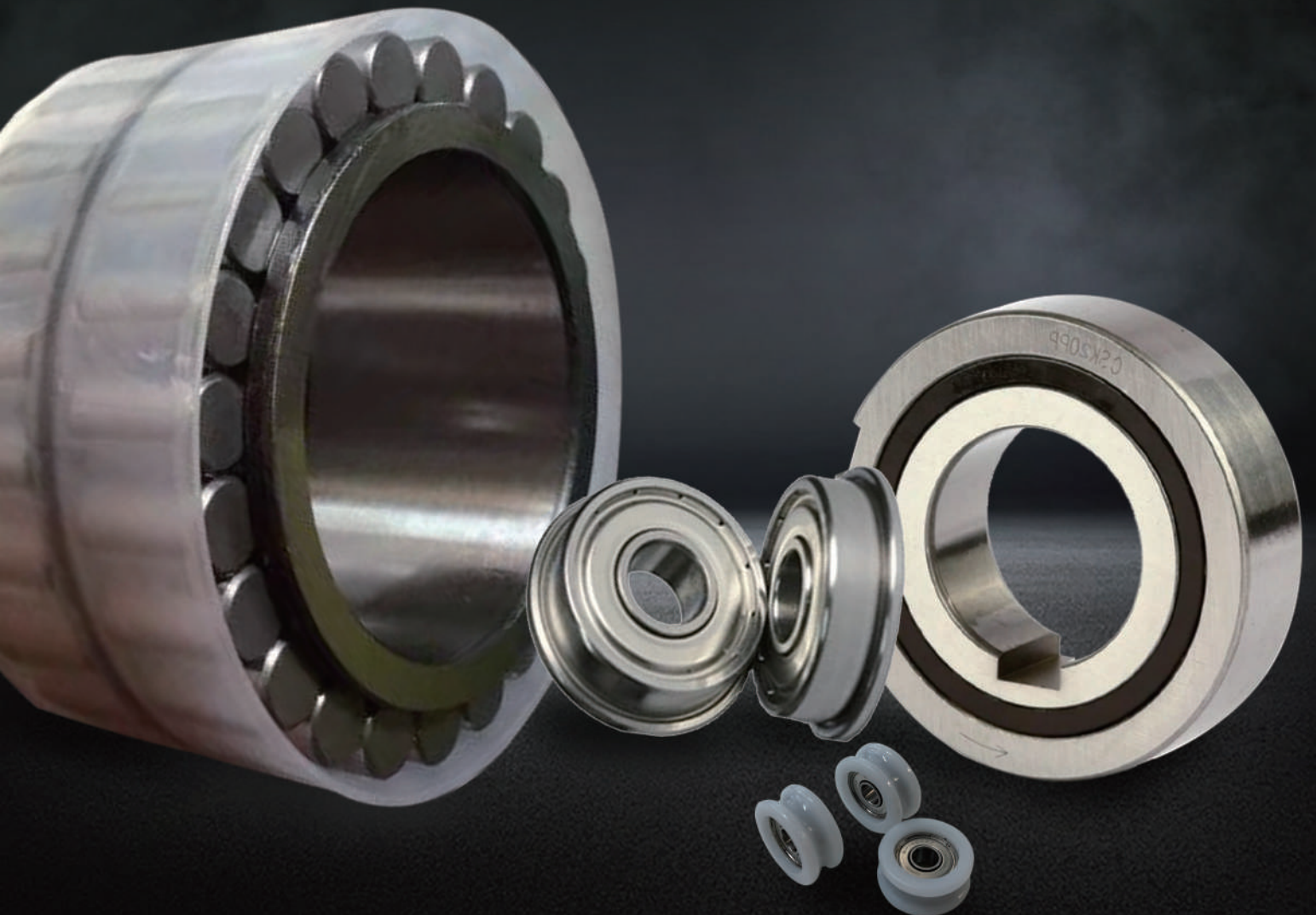
Steel Cage



Brass Cage

Model	Inner diameter x outer diameter x height(mm)	With oil seal(mm)		Steel plant specialty
540626AA	100 x 150 x 50/62	113 x 150 x 12/13.5		549293A
534176	110 x 180 x 69/82	120 x 165 x 10/14.8	125 x 180 x 12/15	BS2B24359D
801806	100 x 160 x 61/66	113 x 150 x 12/13.5	113 x 160 x 13/16	BS2-6359-2CS2
579905A	110 x 180 x 74/82	125 x 180 x 12/15		
579905AA	110 x 180 x 69/82	120 x 165 x 10/14.8	125 x 180 x 12/15	
801215A	110 x 180 x 74/82	125 x 180 x 12/15		non standard aligning roller bearing
BS2B248180	100 x 160 x 61/66	113 x 150 x 12/13.5	113 x 160 x 13/16	BS2B321642B
809280	100 x 160 x 52/65	120 x 165 x 10/14.8		F-22206N
11449	100 x 165 x 52/65	120 x 165 x 10/14.8		M027496
400365	100 x 180 x 69/82	123 x 165 x 14/8		25908/38CA/C3
Z-534176.PRL	100 x 160 x 61/66	113 x 150 x 12/13.5	113 x 160 x 13/16	BS3B
F-800730.PRL	110 x 180 x 69/82	120 x 165 x 10/14.8	125 x 180 x 12/15	545172
F-801806.PRL	100 x 160 x 61/66	113 x 150 x 12/13.5	113 x 160 x 13/16	SR242207
F-809280.PRL	110 x 180 x 74/82	125 x 180 x 15/15		SR262307
F-809281.PRL	100 x 150 x 52/65	120 x 165 x 10/14.8		120SLE2111
PLC58-6	120 x 215x 76/98	K713	135 x 215	22206X1CN
PLC59-5	100 x 150 x 50/62	113 x 160 x 13/16		22205X2
PLC59-10	100 x 180 x 69/82	123 x 165 x 14/8		582305
PLC110/190	110 x 180 x 69/82	120 x 165 x 10/14.8	125 x 180 x 12/15	2P2206
809281	110 x 190 x 79/82	123 x 165 x 14/8		23224X2
804312A	120 x 215 x 76/98	K713	135 x 215	23224X3
40779	120 x 215 x 58/80	145 x 215 x 14		F-575869.9RL
801805A	200 x 300 x 118	235 x 265 x 16		
801216A		YR4027		
804182		123 x 165		
804182		120 x 165 x 10/14.8		
CPM2513D11		235 x 265 x 16		

SPECIAL BEARINGS





Special Bearing



Without outer ring roller bearing



Electrically Insulated bearing



Flange bearing



U Groove Bearing



Joint Bearing



High Temperature Bearing



Eccentric Bearing



One Way Bearing



PU Rubber Coated Bearing

Special bearing

SKF GREASE



SKF grease selection table

LGHP 2

High performance, high temperature grease

SKF LGHP 2 is a premium quality mineral oil based grease, using a modern Polyurea (di-urea) thickener. It is suitable for electric motors and similar applications.

Features & benefits

- Extremely long life at high temperatures
- Wide temperature range
- Excellent corrosion protection
- High thermal and mechanical stability
- Good start-up performance at low temperatures
- Compatibility with common polyurea and lithium thickened greases
- Low noise properties

Typical applications

- Electric motors: Small, medium and large
- Industrial fans, including high speed fans
- Rolling bearings in textile, paper processing and drying machines
- Applications with medium and high speed ball (and roller) bearings operating at medium and high temperatures
- Clutch release bearings
- Vertical shaft applications
- Water pumps
- Kiln trucks and rollers



LGEP 2

High load, extreme pressure grease

SKF LGEP 2 is mineral oil based, lithium soap thickened grease with extreme pressure additives. This grease provides good lubrication in general applications subjected to harsh conditions and vibrations.

- Excellent mechanical stability
- Extremely good corrosion inhibiting properties
- Excellent EP performance

Typical applications

- Pulp and paper making machines
- Jaw crushers
- Traction motors for rail vehicles
- Dam gates
- Work roll bearings in steel industry
- Heavy machinery, vibrating screens
- Crane wheels, sheaves
- Slewing bearings



LGLT 2

Low temperature, extremely high speed grease

SKF LGLT 2 is a fully synthetic oil based grease using lithium soap. Its unique thickener technology and low viscosity oil (PAO) provide excellent lubrication performances at low temperatures

- -50 °C (-60 °F) and extremely high speeds (n dm values of 1,6 x 10⁶ can be reached)
- Low friction torque
- Quiet running
- Extremely good oxidation stability and resistance to water

Typical application

- Textile spinning spindles
- Machine tool spindles
- Instruments and control equipment
- Small electric motors used in medical and dental equipment
- In-line skates
- Printing cylinders
- Robots



LGMT 3

General purpose industrial and automotive NLGI 3 grease

SKF LGMT 3 is mineral oil based, lithium soap thickened grease. This premium quality, general purpose grease is suitable for a wide range of industrial and automotive applications requiring stiff grease.

- Excellent rust inhibiting properties
- High oxidation stability within its recommended temperature range

Typical applications

- Bearings >100 mm (3.9 in.) shaft size
- Outer bearing ring rotation
- Vertical shaft applications
- Continuous high ambient temperatures >35 °C (95 °F)
- Propeller shafts
- Agricultural equipment
- Car, truck and trailer wheel bearings
- Large electric motors



LGMT 2

General purpose industrial and automotive grease

SKF LGMT 2 is mineral oil based, lithium soap thickened grease with excellent thermal stability within its operating temperature range. This premium quality, general purpose grease is suitable for a wide range of industrial and automotive applications.

- Excellent oxidation stability
- Good mechanical stability
- Excellent water resistance and rust inhibiting properties

Typical applications

- Agricultural equipment
- Automotive wheel bearings
- Conveyors
- Small electric motors
- Industrial fans

LGFP 2

SKF Food Grade Lubricants

SKF LGFP 2 is a clean, non-toxic bearing grease, which is based on medical white oil using an aluminium complex soap.

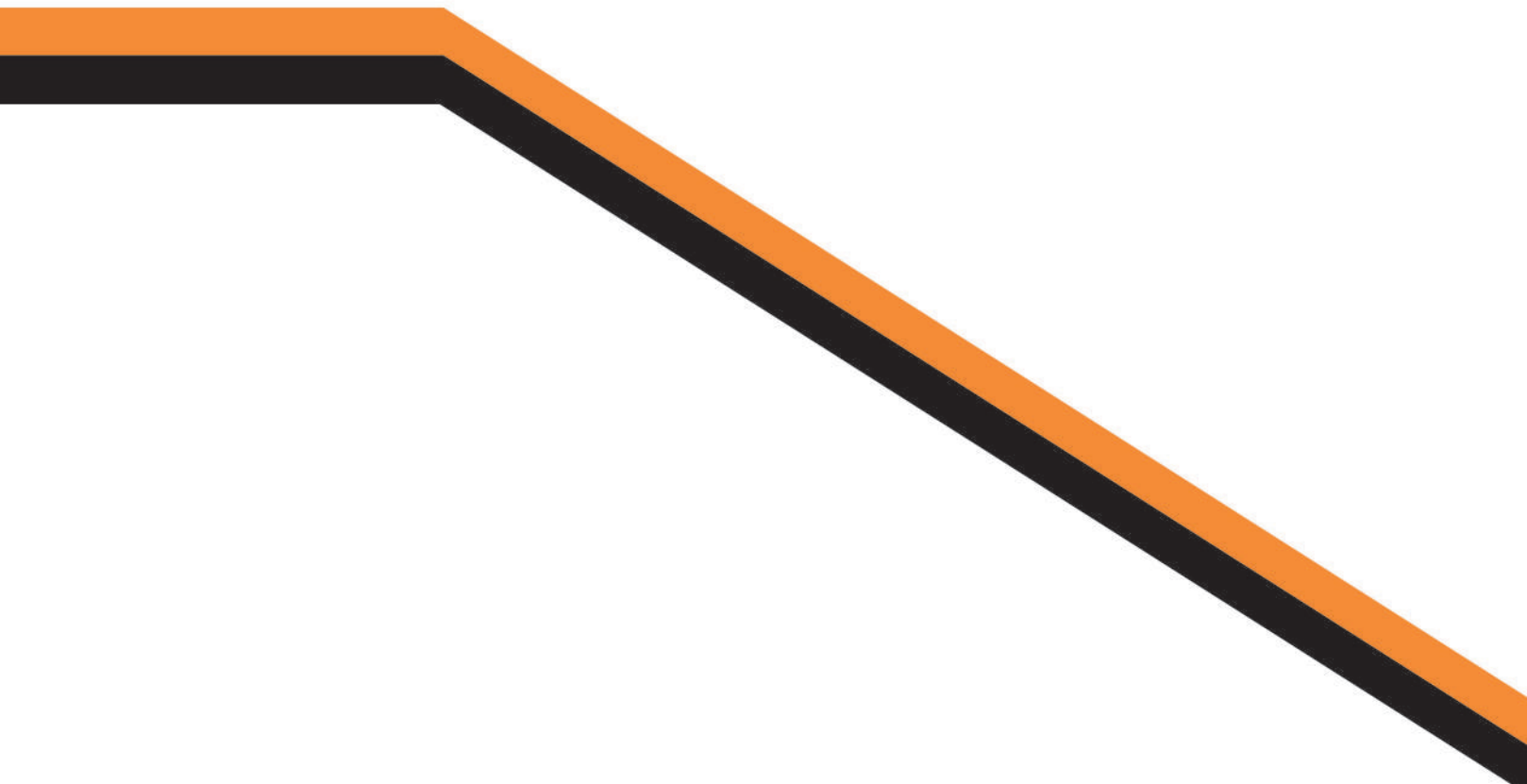
- High resistance to water
- Excellent grease life
- Excellent corrosion resistance
- An essentially neutral pH value
- NSF H1 registered, Halal and Kosher certified

Typical applications

- Bakery equipment
- Food processing equipment
- Multi-pack cassette bearings
- Wrapping machines
- Conveyor bearings
- Bottling machines



For more users to provide quality products and services



Purchasing Hotline: 022-27686572

Enterprise mailbox: joanasong@dsrbearing.com

Website: www.dsrbearing.com

Company address: 3307, Rongqiao center, Changjiang Road, Nankai District, Tianjin

Warehouse address: 158 West Third Road, free trade laboratory, Tianjin Airport Free Trade Zone